



ARRIVE: UK EMERGING MARKETS TECH EIS & SEIS FUND SUMMARY

The launch of Arrive UK Emerging Markets Tech Fund, marks RLC Ventures' third SEIS/EIS fund. The focus will be predominantly on companies with emerging markets footprints, that fit within RLC Ventures' primary investment verticals.



About RLC Ventures

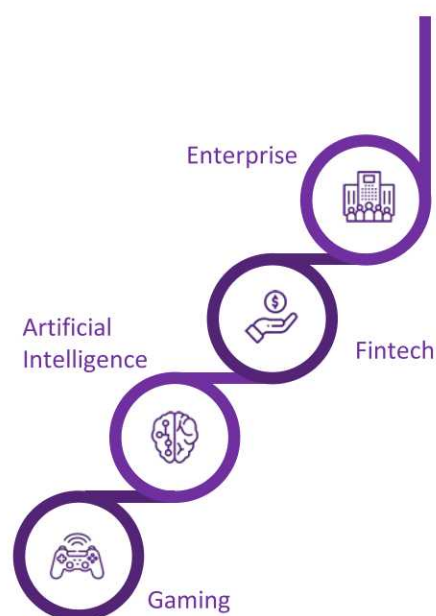
RLC Ventures is an award winning early-stage Venture Capital fund investing in pre-seed and seed opportunities in the UK. The fund targets technology companies with scalable and capital light business models.

All our investments fall into the following categories – AI, Enterprise, Fintech, and Gaming, as we believe these sectors and technologies present vast opportunity, demand and scale going forward.

In order to manage risk, each investor will receive a diverse portfolio of investments ranging across our investment verticals.

In addition to the above, we look to back companies with emerging market footprints.

Our current portfolio has a presence in the following verticals:



Our Emerging Market Footprint



We aim to invest in companies with a UK and Emerging Market footprint, as we believe they offer a competitive advantage to founders due to;

1



Improved Cost Efficiency

2



Access to larger markets

3



Greater Talent Acquisition
& Management

Track Record

Since RLC Ventures’ inception in 2016, we have reached several key milestones, including a portfolio of 40+ companies, a number of exits (including 38x on latest exit) and an increasingly growing presence amongst the UK venture and entrepreneurial ecosystem.

Our portfolio return (TVPI) is 3.0x.

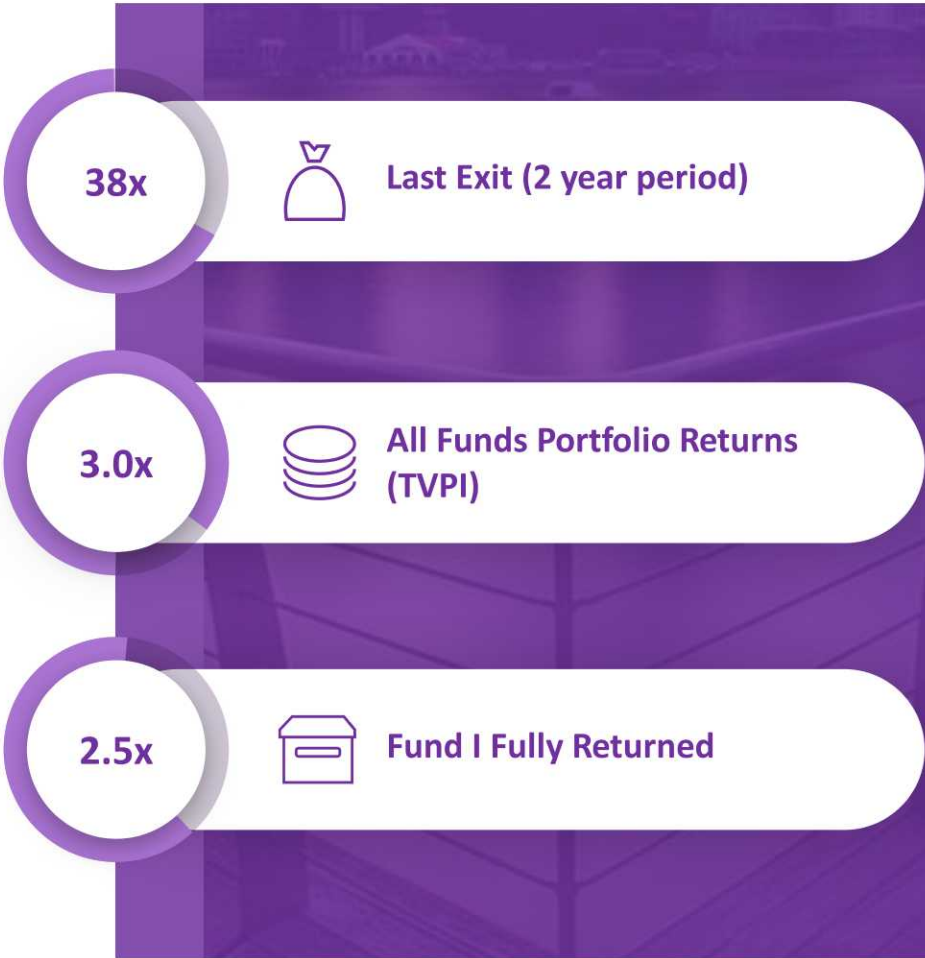
In addition to our returns and the number of investments completed to date, we have made an impact through our beyond-capital approach to investing, providing founders with mentorship and advisory from our core team and wider network, adding significant value to our portfolio companies’ business strategy, growth expansion and operational efficiency.

This has been recognized both through the awards we have been nominated for/won, and through the founders we have worked with, as 100% of the founders we have backed, would recommend us to other entrepreneurs, and this continues to provide us with access to the highest quality investment opportunities.

Our current SEIS & EIS funds


3
Funds
Launched


42
Investments
(Fund and Personal)



Valuations as of 2nd January 2020



Unrealised Return is the value of the balance of the investment portfolio including potential earn-outs on exits

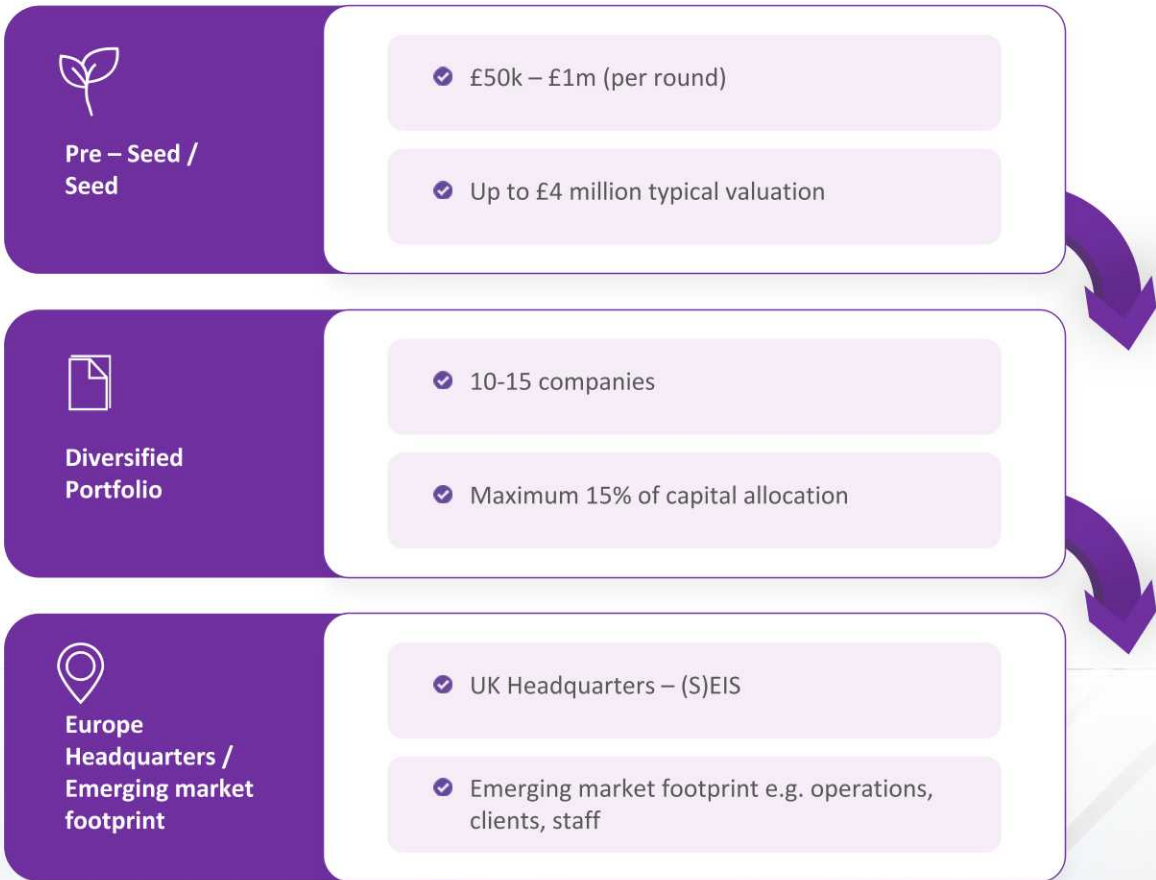


Past performance is no guarantee of future performance

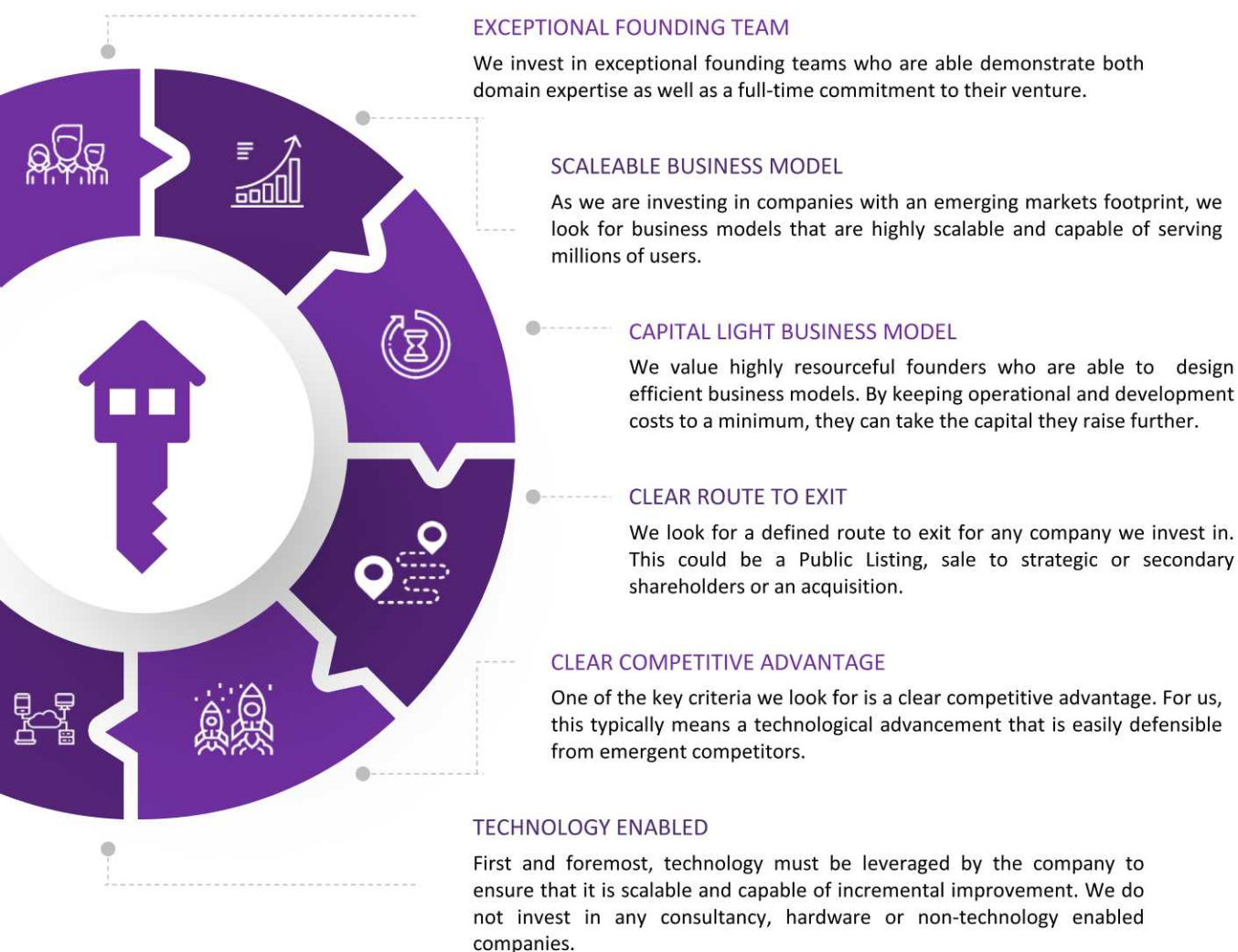
Arrive Fund Strategy

Through the Arrive Fund, RLC Ventures investment team will look to invest between £50,000 - £1,000,000 per round, at a typical pre-money valuation up to £4 million pounds. The Arrive Fund portfolio will be composed of between 10-15 companies, spanning across the 6 investment verticals RLC Ventures invest in.

The companies will all be UK headquartered, in order to be (S)EIS eligible, and technology enabled with an emerging market footprint, as explained in greater detail on Page 1. In order to minimize downside risk, the maximum allocation a company can receive of the fund is 15%.



Key Investment Criteria



Why invest In RLC Ventures

CORE TEAM

The RLC Ventures core team has over 50 years combined investment and operational experience, having managed in excess of £5bn AUM across emerging markets. The team previously held positions at companies such as Ernest & Young, Barclays, MBO Capital, Adam Street Financial & Goldman Sachs.

The wider team also bring experience in areas including Sales, products & marketing, operations and finance.

ADVISORY TEAM

The RLC Ventures advisory team has over 100 years combined investment experience, with experience in scaling companies from £3m to £3bn revenue, and managing in excess of £1bn AUM.

Their global networks span numerous industries and geographical locations, and provide invaluable resources and council to the companies within our portfolio.

ALIGNMENT

Our team personally invests a minimum 2.5% in every single deal alongside the fund, to ensure our interests are aligned.



Brookfield



The Telegraph



100

Years combined investment
Experience

6

Awards
won/nominated

8

Social causes supported
via Venture Pledge

The Venture Pledge

RLC Ventures continues to be the only VC globally who donates a percentage of their carry fees to socially responsible causes and charities. These causes are elected by our portfolio founders at the time of investment.

Through our most recent exit, we will be donating over £12,000 to a UK charity in 2020, as chosen by the founder we have worked with.

Through this pledge, RLC Ventures is helping to achieve the UN's Sustainable Development Goals, in order to "end poverty, protect the planet and ensure prosperity for all".

Some of the causes we support:



Current Portfolio Highlights



Greendeck is an AI pricing business for online retailers. It offers competitor tracking & pricing intelligence.



Labworks is a voice games studio based in London and Lithuania. They've created some of the most popular and innovative games on Alexa.



Scribeless is AI handwriting tool enabling businesses to send custom, handwritten letters to customers.



For Good Causes offers a technology platform connecting brands, banks, business and consumers to charitable organisations.



LandlordInvest is a peer-to-peer lending platform, connecting investors to landlords through their platform.



Winningminds is a conversational analysis tool harnessing AI to deliver accurate meeting analytics to improve team collaboration and performance.

Arrive Fund Summary

The following table gives a brief overview of RLC Ventures third fund, Arrive UK Emerging Markets Tech Fund. For more information, please download the full Investment Memorandum by [clicking here](#).

Fund Type	SEIS/EIS
Sectors	Technology Companies
Minimum Investment	£50,000
Portfolio size	10-15
Target time to full deployment	12 months
Target fund return	2.6x

Charges and Fees

Our investor fees are outlined below and are subject to VAT:

Annual management Fee	1.6%
Performance incentive fee	20% (after management fee and return of capital)

Looking to invest?

Please ensure you have spoken to your financial advisor and have read the Investment Memorandum in full, which can be found [here](#).
If you have any questions, please contact RLC Ventures :
Email at: info@rlc.ventures
By post at: 91-93 Buckingham Palace Rd, Victoria, London SW1W 0RP.
Call us: 020 3488 4297

RLC Ventures

-  twitter.com/rlcventures
-  linkedin.com/company/rlcventures/
-  info@rlc.ventures
-  www.rlc.ventures

If any further information related to the Fund is required please contact the Fund Manager.

Fund Manager

SFC Capital Partners Limited 1-6 Speedy Place
Cromer Street London WC1H 8BU
info@sfccap.com

Nominee: SFC Nominees Limited

FCA Regulatory: AR SFC Capital Partners Ltd (Fund Manager)

Custodian: Bennett Brookes & Co Limited



Risk Warning:

Intended for distribution to persons who are eligible to be classified as professional client as per COBS 3.5 (<https://www.handbook.fca.org.uk/handbook/COBS/3/5.html>); please consult a professional advisor if you are in any doubt. RLC Ventures Ltd. is an appointed representative of SFC Capital Partners Ltd (the "principal firm") which is authorised and regulated in the UK by the Financial Conduct Authority ("FCA"), Firm Reference Number 736284, and has approved this document. RLC Ventures Ltd. is located at 91-93, Buckingham Palace Road, Victoria, London, SW1W 0RP. This document is intended for UK professional investors only, not retail customers; any reproduction of this information, in whole or part, is prohibited. This summary document is provided for information purposes only and should not be used or considered as an offer or solicitation to purchase any investments mentioned herein. Tax treatments of SEIS /EIS schemes depend upon individual circumstances, are subject to change and depend on the companies in which the fund investments maintaining their qualifying status (which is subject to change and may be withdrawn at any time by HMRC). Prospective investors should seek professional advice to determine the tax position in their specific circumstances. The RLC Ventures Fund Arrive Emerging Markets Tech SEIS/EIS Fund ("RLC Arrive Fund") is an Alternative Investment Fund ("AIF") for the purposes of the Alternative Investment Fund Managers Directive ("AIFMD"). It is not an Unregulated Collective Investment Scheme within the meaning of section 235 of FSMA nor a Non-Mainstream Pooled Investment.

Any decision by an investor to buy shares in a fund must be made solely on the basis of the information and terms contained within the Fund's offering memorandum. Investment in the Fund is made entirely at the investor's own risk and professional advice should be sought in case of doubt. The RLC Arrive Fund is an SEIS/EIS fund which raises money for early-stage businesses by investing in SEIS and EIS eligible ventures with the aim of returning a profit for investors in the fund. Investment in early-stage companies involves risks such as illiquidity, lack of dividends, loss of investment and dilution. Investment in SEIS/EIS funds should be considered as part of a diversified portfolio. The availability of tax relief depends on individual circumstances and may change in the future. The availability of tax relief depends on the company invested in maintaining its SEIS/EIS qualifying status. There is no assurance that the investment objectives of any investment product will be achieved or that the strategies and methods described herein will be successful. Past performance is not necessarily a guide to future performance and the value of an investment may go down as well as up in addition to placing capital at risk. Investors may not get back the full amount invested. This material is confidential and is the property of RLC Ventures Ltd. Recipients are deemed to have agreed to treat the information contained herein as confidential and therefore may not disclose, copy, or redistribute such information (in whole or in part) to any person. No warranties or representations of any kind are expressed or implied herein.